

The background of the image is a soft, light blue gradient. It is populated with numerous water droplets and bubbles of various sizes, some appearing as thin, translucent shells and others as more solid, rounded forms. The droplets are scattered across the frame, with a higher concentration on the left side. The overall aesthetic is clean, fresh, and scientific.

# **NATORI PHYTO CERAMIDE COMPLEX HD**



**INCI name**

Amorphophallus Konjac Root Extract, Triticum Vulgare (Wheat) Seed Extract, Oryza Sativa (Rice) Extract

# NATORI PHYTO CERAMIDE COMPLEX HD

Consists of 3 types of vegetable ceramides. Synthetic and plant-based ceramides are similar in structure to ceramides found in the skin. Phytoceramides are known to help boost the skin's barrier function, reduce irritation, and moisturize the skin and reduce the appearance of fine lines.



Moisturizing



Anti-aging



Boosts skin barrier

# WHAT ARE PHYTOCERAMIDES?

Foods that contain phytoceramides include: Soybeans, millet, **wheat**, **rice**, spinach, sweet potatoes, potatoes, corn, **konjac**

The term “phyto” means plant, so “phytoceramides” are **ceramides found in plants**. Ceramides are a class of compounds, along with fatty acids, proteins and cholesterol found in the skin's outer layer, that help **retain moisture**. By plumping up the skin, moisture can reduce the appearance of wrinkles.



# SKIN BENEFITS



## **Amorphophallus Konjac Root Extract**

**Ceramide source** that is sustainable and free from the major 8 food allergens as defined by the Food Allergen Labeling and Consumer Protection Act (FALCPA).

A power plant **rich in vitamins** A, B1, B2, B6, B12, C, D, and E, Proteins, Lipids, and Fatty Acids, and minerals like Zinc, Magnesium, and Iron. Helps absorb and retain high levels of moisture, smoothing out wrinkles and keeping our epidermis hydrated and healthy.



## **Triticum Vulgare (Wheat) Seed Extract**

Wheat seed extract is rich in vitamins, minerals, and essential fatty acids that provide **nourishment** to the skin. It can help to **revitalize dull and tired-looking skin**, giving it a healthier and more **radiant appearance**. It also has soothing and calming properties, which can help to alleviate skin irritation, redness, and inflammation



## **Oryza Sativa (Rice) Extract**

Rice extract is known to be deeply hydrating. It has saturated and unsaturated fatty acids, that enhance the **natural collagen production and improve the skin's firmness**. Rice extract is rich in antioxidants and anti-inflammatory proponents, which soothes and moisturizes skin.

# Information on use

## Specifications

|                      |                                      |
|----------------------|--------------------------------------|
| <b>Appearance</b>    | Colourless to slightly yellow liquid |
| <b>Odour</b>         | Characteristic                       |
| <b>Colour</b>        | Colourless to slightly yellow        |
| <b>pH</b>            | 4.5 – 7.5                            |
| <b>Preservatives</b> | 1,2-Hexanediol                       |

## Formulation

|                                 |   |
|---------------------------------|---|
| <b>Recommended Use Level, %</b> | 5.0 – 90.0  |
| <b>Incorporation</b>            | Add into aqueous phase at any temperature             |
| <b>Stability</b>                | High or low temperatures do not affect its stability. |



# Efficacy

## Moisturizing and Anti-Aging Effects

### Compositions of *amorphophallus konjac* and methods for their use in skin care

Compositions derived from an extract of *Amorphophallus konjac* and methods for their use in the treatment of skin conditions. The compositions of the invention find use in maintaining the health of the skin and treating a variety of skin conditions, including wrinkles and fine lines, loss of skin tone, and hyperpigmentation. Without being limited to any particular theory or mechanism, the compositions of the invention treat skin conditions through the inhibition of enzymes, including but not limited to, collagenase, elastase and tyrosinase.

TABLE 6

| In vitro anti-collagenase activity of konjac composition<br>% inhibition of Collagenase activity |       |                |
|--|-------|----------------|
| Concentration in µg/ml   | EGCG  | Konjac extract |
| Blank  |       |                |
| 20   | 8.30  | 19.78          |
| 40   | 16.93 | 21.01          |
| 60   | 25.83 | 26.37          |
| 80   | 32.70 | 34.20          |
| 100  | 41.52 | 41.07          |

### The Moisturizing Effects of Konjac Composition

**[0069]** The moisturizing effect of konjac extract was examined in vitro.

**[0070]** Sample preparation: The konjac composition sample solution was prepared by mixing with ceramide-base and distilled water in the ratio 3%, ceramide-base 5% and distilled water 92%.

**[0071]** Condition: Temperature 35° C., RH 40%

**[0072]** 1 g of test sample was weighed and added to vessel (3 cm). Samples were weighed 8 hours later. Moisturizing ratio was calculated as follows:

$$\text{Moisturising Ratio (\%)} = \left\{ \frac{\text{Weight at 0 hour} - \text{Weight at Time}(t)}{\text{Original Weight}} \right\} \times 100$$

**[0073]** The konjac composition demonstrated superior moisturizing effect with maximum moisturizing ratio of 80.45% as compared to control which is 31.02%. (FIG. 10). Our study shows that the konjac composition can be exploited as moisturizer to make the skin look younger and brighter.

<https://patents.google.com/patent/US20160184218A1/en>

<https://patentimages.storage.googleapis.com/5c/a0/8e/14ff2bfc4de5fd/US20160184218A1.pdf>

# Efficacy

## Wound Healing, Regenerating Damaged Tissues

### *A Triticum vulgare* Extract Exhibits Regenerating Activity During the Wound Healing Process

[Annalisa Tito](#),<sup>1</sup> [Massimiliano Minale](#),<sup>2</sup> [Salvatore Riccio](#),<sup>2</sup> [Fabrizia Grieco](#),<sup>2</sup> [Maria Gabriella Colucci](#),<sup>1,3</sup> and [Fabio Apone](#)<sup>1,3</sup>

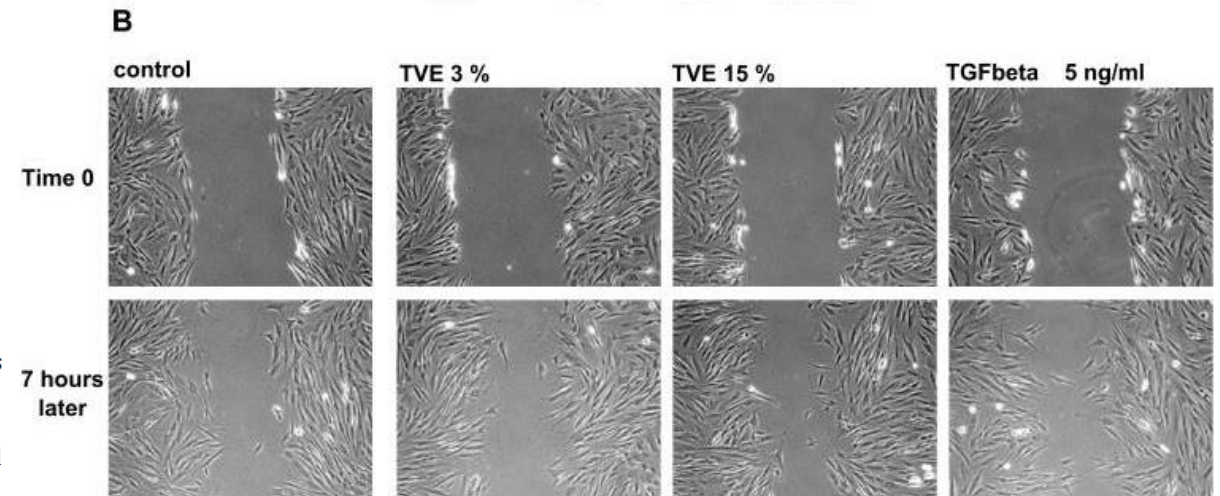
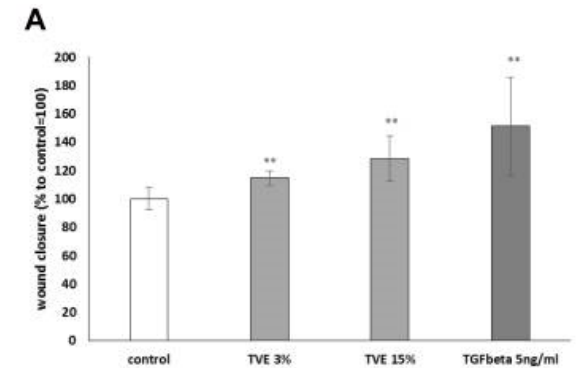
#### Activity of TVE on Wound Repair

To determine the right usage concentrations, we evaluated TVE cytotoxicity in HaCaT and HDF cells treated for 48 hrs with increasing amount of TVE (from 0.1 to 30% v/v) and cell viability was determined by MTT assay (data not shown). No significant cytotoxicity was recorded at all concentrations used.

In order to confirm the previous reported data<sup>8</sup> on the effects of TVE on wound closure acceleration, HDF, grown in monolayer, were mechanically wounded and the closure of wound edges in the presence of 3% and 15% of TVE was evaluated by light microscopy. As positive control, due to its ability of wound repair, was used TGFβ 5ng/mL.<sup>17</sup> As shown in [Figure 1](#), the two concentrations of TVE accelerated the wound repair capacity of the cells, respectively, by 14% and 28%.

In conclusion, this work provides additional clues about the use of a peculiar *Triticum vulgare* aqueous extract as active ingredient in wound care and dermatology, more specifically addressed to regenerate damaged tissues.

Skin wound healing is a complex process, dependent upon the cell types and the chemical mediators interacting in a highly sophisticated time sequence. It is a dynamic process triggered as a response to tissue injury, aims at repairing the matrix and the cell damages, and at restoring the skin barrier integrity, proceeding through four overlapping phases: haemostasis, inflammation, proliferation and remodelling.<sup>2</sup> The healing process starts with the haemostasis stage, consisting of the formation of



# PRODUCTS WITH PHYTOCERAMIDES



# SKINFOOD

## ROYAL HONEY MOISTURE TONER

### Product Claims:

- An ultra-moisturizing toner made with gentle & nourishing ingredients like royal black honey extract, that is safe on sensitive skin.
- 99.9% of the ingredients are natural.
- No artificial flavoring, silicon oil or mineral oil added.

**Ingredients:** Water, Glycerin, Butylene Glycol, Royal Jelly Extract, **Amorphophallus Konjac Root Extract**, Beta-Glucan, Biosaccharide Gum-1, Betaine, Trehalose, Portulaca Oleracea Extract, Honey Extract, Chamomilla Recutita (Matricaria) Flower Extract, Xanthan Gum, Sodium Hyaluronate, Sodium Citrate, Ethylhexylglycerin, 1, 2-Hexanediol



# MADARA

## HYDRA-GEL EYE PATCHES

### Product Claims:

- Deeply hydrates the eye contour skin for an instantly lifted appearance.
- The mask delivers active ingredients deeply into the skin, helping to soften wrinkles, reduce puffiness, dark circles and under-eye bags.

**Ingredients:** Aqua, Hordeum Vulgare (Barley) Extract, Glycerin, Carrageenan, **Amorphophallus Konjac Root Extract**, Glucose, Phenethyl Alcohol, Sodium levulinate, Sodium anisate, Glycogen, Sodium Benzoate, Sodium Hyaluronate, Citric acid, Darutoside



# BIOThERM

## CERA REPAIR BARRIER CREAM WITH CERAMIDES

### Product Claims:

- The Cera Repair Barrier Cream leverages the power of ceramides to reinforce and repair the skin barrier for soothed, stronger and healthier-looking skin from the first use.
- Amplified by Blue Sciences, the powerful association of natural bioceramides to repair the skin barrier and Life Plankton™ probiotic fraction to reinforce and soothe skin from the 1st use ensure skin is stabilized, stronger and healthier-looking.



**Ingredients:** Aqua/Water/Eau, Glycerin, Dicaprylyl Ether, Pentylene Glycol, Polyglyceryl-6 Distearate, Propanediol, Cetyl Esters, Jojoba Esters, Cetearyl Isononanoate, Behenyl Alcohol, Acacia Decurrens Flower Cera/Acacia Decurrens Flower Wax, Helianthus Annuus Seed Cera/Sunflower Seed Wax, **Triticum Vulgare Seed Extract/Wheat Seed Extract**, Centella Asiatica Extract, Ceramide NP, Sorbitan Oleate, Isohexadecane, Sodium Hyaluronate, Sodium Stearoyl Glutamate, Adenosine, Hydroxyacetophenone, Hydroxypropyl Starch Phosphate, Capryloyl Salicylic Acid, Vitreoscilla Ferment, Trisodium Ethylenediamine Disuccinate, Polyglycerin-3, Polyglyceryl-3 Beeswax, Polysorbate 80, Acrylamide/Sodium Acryloyldimethyltaurate Copolymer, Cetyl Alcohol, Tocopherol, Parfum/Fragrance



 [www.ecoori.com](http://www.ecoori.com)  [sales@ecoori.com](mailto:sales@ecoori.com)

 T: +65 6863 1808 | F: +65 6863 1819

   Click our Icons to Follow Us!