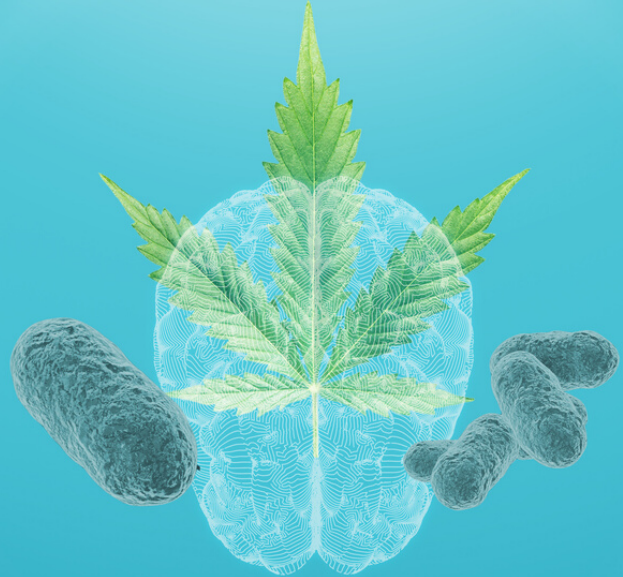




Kannabia Sense™

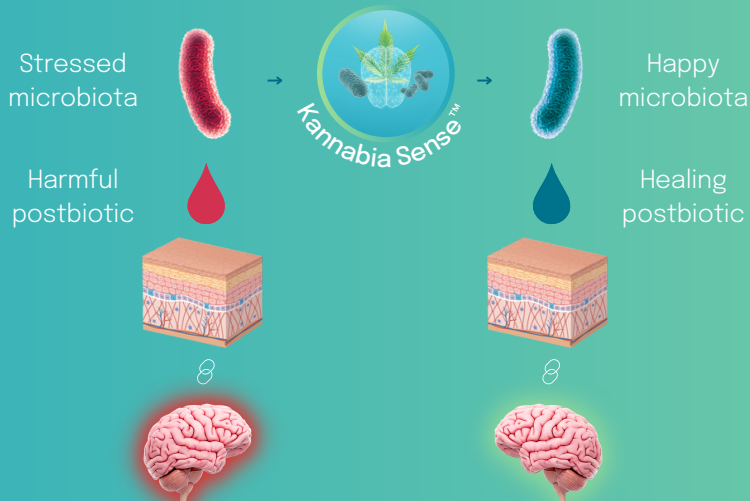
The Microbiota Whisperer



A natural active that makes you feel good, and look beautiful by ...

- Activating brain pleasure areas
- Inducing a better self-perception & positive emotions
- Promoting a healthier and prettier skin
- Unique Cannabis stem cells

A neurocosmetic mechanism In-situ postbiotic cocktail



Cannabis sativa

A new raw material with no cannabinoids and full of terpenes, polyphenols and Short-Chain Fatty Acids.

The Microbiota-Skin-Brain Axis

If we properly nourish the skin commensal microbiota, it will be in homeostasis and will secrete an in situ postbiotic rich in beneficial molecules for the skin.

REQUEST
A SAMPLE



Kannabia Sense™ proven efficacy

IN VITRO

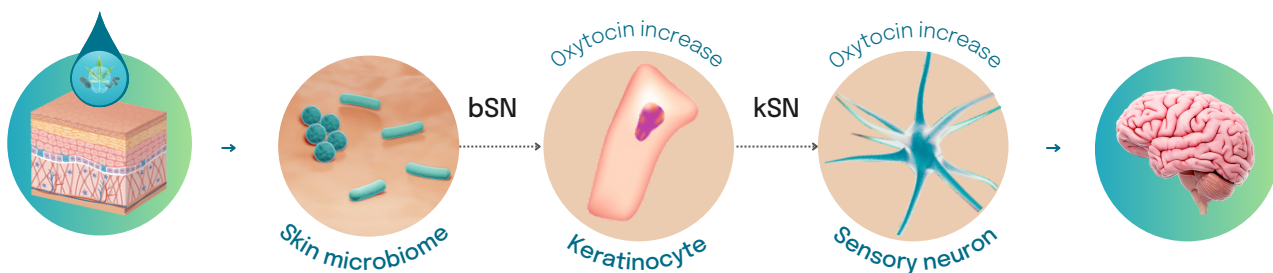
MODULATION OF THE MICROBIOTA-SKIN-BRAIN AXIS

Kannabia Sense™ activates the oxytocin production in keratinocytes. The activation is done through the in-situ postbiotic (bSN) activating oxytocin production through the skin microbiota to keratinocytes (kSN) and sensory neurons.

MICROBIAL STIMULATION AND POSITIVE BRAIN ACTIVATION

APPLYING KANNABIA SENSE™ TO THE SKIN

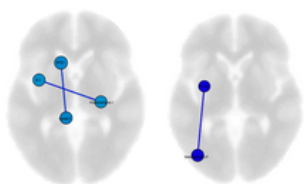
BOOSTING OXYTOCIN ON THE BRAIN



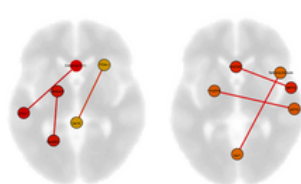
IN VIVO

EMOTIONAL MODULATION BY FMRI*

PLACEBO



KANNABIA SENSE™



Kannabia Sense™ positively stimulates the brain pleasure areas 10 minutes after the application. 132 brain regions were analysed.

*Functional Magnetic Resonance Imaging. Approved by an ethical committee at Hospital de la Fe (Valencia, Spain).

OXYTOCIN LIKE EFFECT

A cosmetic ingredient that makes you well-age while lifting your mood



IN VIVO

SKIN WELL-AGEING EFFECT

WRINKLES, RADIANCE AND HYDRATION



Kannabia Sense™ significantly increased the skin radiance and hydration level by 18% and by 19%, respectively.

SKIN RADIANCE IMPROVEMENT

WRINKLE AREA REDUCTION UP TO **-44%**

WRINKLE LENGTH REDUCTION UP TO **-32%**

INCI (Active)

Cannabis Sativa Seed Oil

DOSAGE

0.5 - 3%

FORMULATION

Dispersible in water, oil and ethanol.
Incorporation during the cooling phase (<40°C)

